

**NOW at the Corcoran
Corcoran Gallery of Art
Claire Healy and Sean Cordeiro:
*Are We There Yet?***

December 3, 2011–March 11, 2012

Contact:

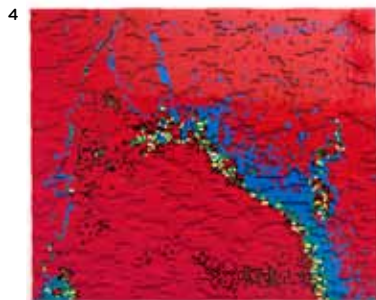
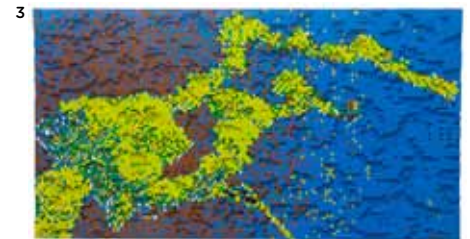
Rachel Cothran, PR
(202) 639-1833,
rcothran@corcoran.org

Melanie Kimmelman, PR,
(202) 639-1873,
mkimmelman@corcoran.org

Conditions for reproduction are as follows:

- Images may not be cropped or bled off the page.
- No text may appear over the images.
- Images must be published with complete caption and copyright information.
- Credit lines must appear directly under the reproduction, or on the page facing the reproduction.
- Images must be deleted from database at the completion of project.

1. Claire Healy and Sean Cordeiro. Sydney 2009. Photo: Olivia Martin-McGuire.
2. Claire Healy and Sean Cordeiro, *Are We There Yet?* (detail) 2011. Gallery installation at the Corcoran Gallery of Art, Washington D.C. 97 boxes of 3l. Black Box Chardonnay, 360 Boyardee Beef Ravioli 15 oz. tins, 83 cases of Bud Light, 624 cans of Carnation Evaporated Milk, 43 Cheerios Twin pack 37 oz., 95 cases of Coca Cola, 40 Kraft Velveeta loaves (2 x 32 ounce loaves per package), 49 boxes of Nabisco Premium Saltine Crackers 3 LB., 25 cases of Marlboro Red, 41 containers of Utz cheese balls, replica EVA Space Suit on loan from NASA, IKEA bed, pillow, duvet, gold anodized aluminum, 239 x 732 x 312 in. Courtesy of the artists, Gallery Barry Keldoulis, Sydney, and Frey Norris Contemporary & Modern, San Francisco.
3. Claire Healy and Sean Cordeiro, *T+102_blue&green*, 2011, from the series *Where We've Been, Where We're Going, Why*, 2010–2011. Lego, 34 1/2 x 63 x 1 1/2 inches. Courtesy of the artists, Gallery Barry Keldoulis, Sydney.
4. Claire Healy and Sean Cordeiro, *T+64_red*, 2011, from the series *Where We've Been, Where We're Going, Why*, 2010–2011. Lego, 51 1/2 x 44 x 1 1/2 inches. Courtesy of the artists and Gallery Barry Keldoulis, Sydney.
5. Claire Healy and Sean Cordeiro, *T+85_red&yellow*, 2010, from the series *Where We've Been, Where We're Going, Why*, 2010–2011. Lego, 41 x 117 inches (diptych). Courtesy the artists and Gallery Barry Keldoulis, Sydney.



**NOW at the Corcoran
Corcoran Gallery of Art
Claire Healy and Sean Cordeiro:
*Are We There Yet?***

December 3, 2011–March 11, 2012

Contact:

Rachel Cothran, PR
(202) 639-1833,
rcothran@corcoran.org

Melanie Kimmelman, PR,
(202) 639-1873,
mkimmelman@corcoran.org

Conditions for reproduction are as follows:

- Images may not be cropped or bled off the page.
- No text may appear over the images.
- Images must be published with complete caption and copyright information.
- Credit lines must appear directly under the reproduction, or on the page facing the reproduction.
- Images must be deleted from database at the completion of project.

6. Claire Healy and Sean Cordeiro, *T+100_yellow*, 2011, from the series *Where We've Been, Where We're Going, Why*, 2010–2011. Lego, 63 × 28 × 1 ½ inches. Courtesy the artists and Gallery Barry Keldoulis, Sydney.
7. Claire Healy and Sean Cordeiro, *Life Span*, 2009. 175, 218 VHS video cassettes and silicone, 236 × 130 × 203 ½ inches. Installed at the Ludoteca, 53rd Venice Biennale. Courtesy of the artists and Gallery Barry Keldoulis, Sydney.
8. Claire Healy and Sean Cordeiro, *Hänsel and Gretel*, 2008. Laser etched IKEA *knäckebröd*, 18 × 18 × 1 ½ inches. Courtesy of the artists and Gallery Barry Keldoulis, Sydney. Mohseni Collection, Hong Kong and Singapore. Photo: Uwe Walter.
9. Claire Healy and Sean Cordeiro, *I Hope Tomorrow is just like Today*, 2008. IKEA furniture, 126 × 90 ½ × 6 inches. Courtesy of the artists and Gallery Barry Keldoulis, Sydney. Belgiorno-Nettis Foundation Collection. Photo: Uwe Walter.
10. Claire Healy and Sean Cordeiro, *Deceased Estate*, 2004. Installation of entire found detritus from artists' warehouse, Weil am Rhein, Germany. Courtesy the artists and Gallery Barry Keldoulis, Sydney. Photo: Christian Schnur.

